

# **DL-100T485 Quick Start**

## **Warranty**

All products manufactured by ICP DAS are under warranty regarding defective materials for a period of one year from the date of delivery to the original purchaser.

## **Warning**

ICP DAS assumes no liability for any damage resulting from the use of this product. ICP DAS reserves the right to change this manual at any time without notification. The information furnished by ICP DAS is believed to be accurate and reliable. However, no responsibility is assumed by ICP DAS for its use, nor for any infringements of patents or other rights of third parties resulting from its use.

## **Copyright**

Copyright© 2014 ICP DAS. All rights reserved.

## **Trademarks**

Names are used for identification purposes only and may be registered trademarks of their respective companies.

Date: 2014/6/18

# Table of Contents

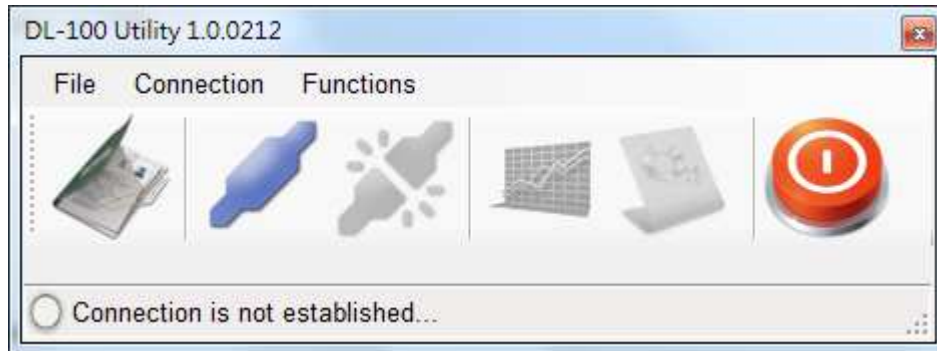
Before you use the Utility Software.....	3
DL-100T485 Utility Illustration .....	4
Connecting to the DL-100T485 .....	5
Retrieving Records.....	6
Configuration .....	7







## Before you use the Utility Software

1. Before you use this Utility, please make sure you have installed the Microsoft .NET Framework 4. If you haven't installed .NET Framework yet, please refer to section 2 for more information, or refer to section 3 for more information about the installation of this Utility.
2. To download .NET Framework, refer to :  
<http://www.microsoft.com/downloads/en/details.aspx?FamilyID=9cfb2d51-5ff4-4491-b0e5-b386f32c0992&displaylang=en>
3. The Utility software is located on the attached CD at Napdos\DL\_100\Utility.

## DL-100T485 Utility Illustration


1. After launching the Utility, the program interface would be displayed, as shown below:

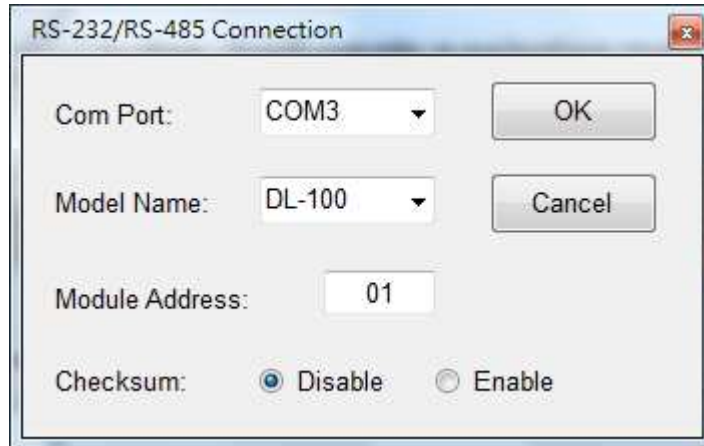


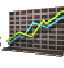



- Clicking “File” or the  icon opens a previous DL-100T485 log data file stored on your PC.
- Clicking “Connection->Connect->RS-232/RS-485” or the  icon creates a connection from the serial port.
- Clicking “Connection->Disconnect” or the  icon disconnects the connection between the PC and the DL-100T485.
- Clicking \* “Functions->Get Records” or the  icon retrieves the log data which is stored in the DL-100T485.
- Clicking \* “Functions->Configuration” or the  icon configures the DL-100T485.
- Clicking “Exit” or the  icon closes the Utility software.

\*This function is only valid when the connection between the PC and the DL-100T485 has been successfully established.

## Connecting to the DL-100T485

1. Clicking the “” button will open the selection menu as shown below:

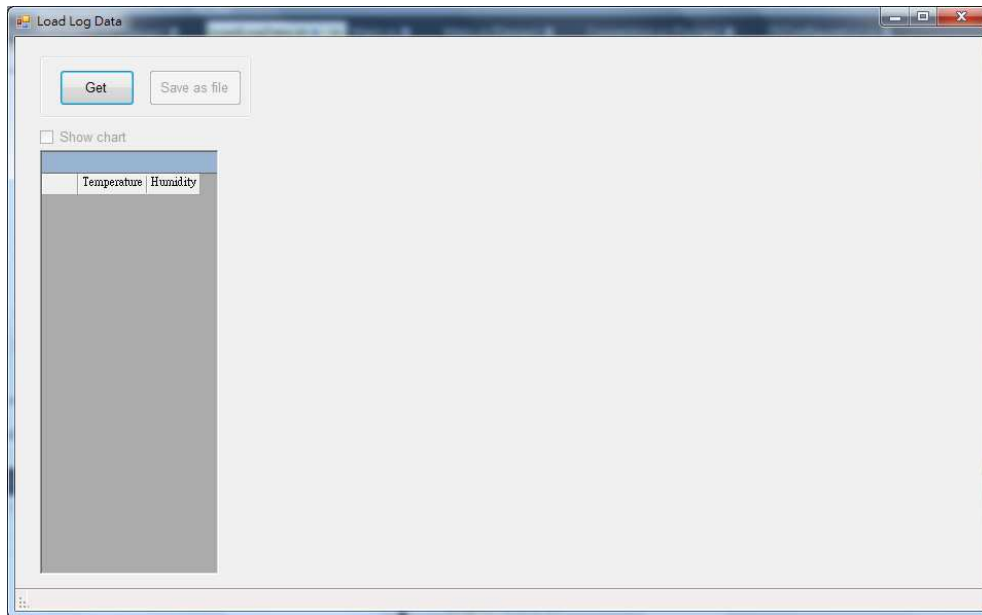


2. Select your COM port number and set the Model Name selection to the DL-100. If you are connecting to a new module, the default address will be 01 and the checksum will be disabled. Click the “OK” button to connect to the DL-100T485.  
**Note: The LCD will also indicate the module address and the checksum status.**
3. If the connection is successfully established, the Utility will return to the previous window and the status bar will display “Connection is established”. The “” and “” icons will also become available.
4. If you want retrieve the records that are stored on the DL-100T485, click the “” icon.
5. If you want configure the DL-100T485 click the “” icon.

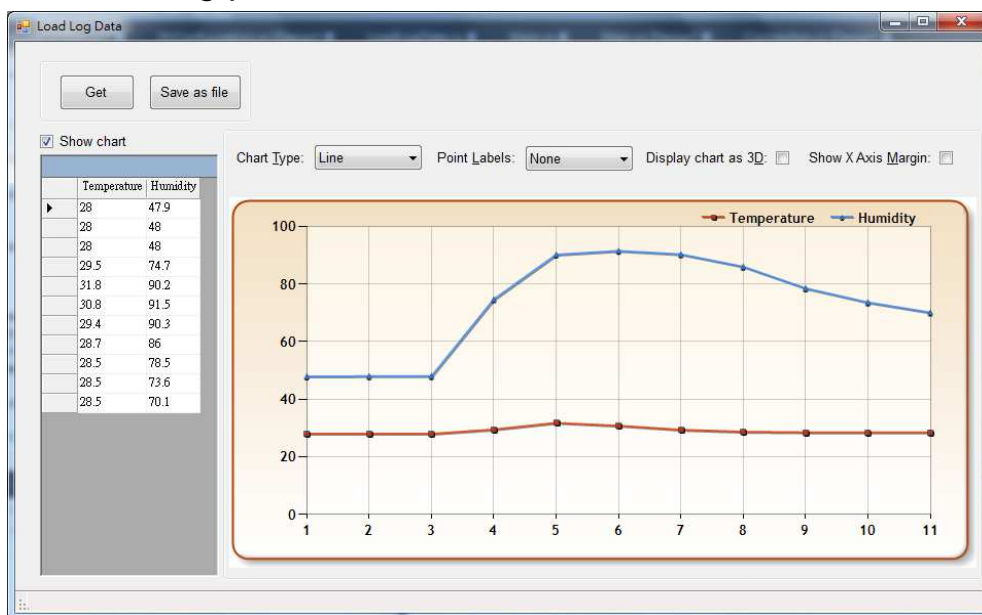
## Retrieving Records

After a connection between the PC and the DL-100T485 is established, you can retrieve the log data via the Utility software. The procedure is as follows:


1. Click the “Get” button and wait until the data is successfully received.



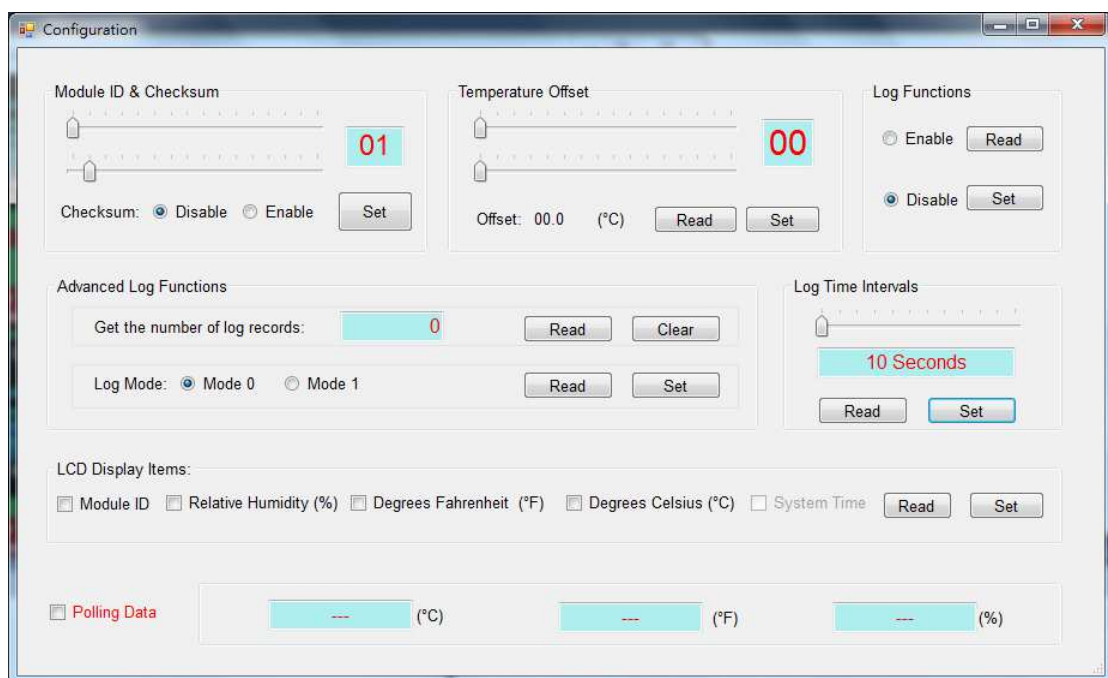
2. The log data will be listed at the left side table and can be opened the trend chart by clicking the “Show chart”. Refer to the following picture for details.



# Configuration

After the connection between the PC and the DL-100T485 has been established, click the “” icon to configure the DL-100T485. The details are shown as follows:

1. A new menu window would be created and the current module configurations will be displayed. After changing the values, click the “Set” button to update the configurations of the module.



2. When you successfully connect to the DL-100 by using the Utility software, this Utility software will disable the data log function. If you need the data log function, you need to enable the data log function before you close the Utility software.